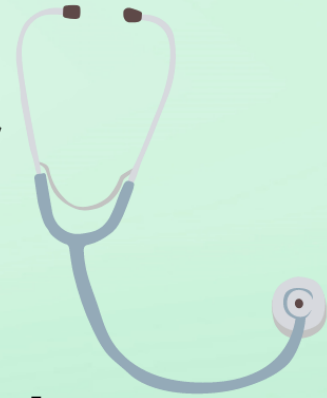




EMORY

NELL HODGSON
WOODRUFF
SCHOOL OF
NURSING

Volunteers Needed **Assessing the Practice of** **Environmental Health** **Among Healthcare Providers**



PURPOSE: To identify the best practices and common barriers for the integration of environmental health in clinical practice.

IF YOU ARE A HEALTHCARE PROVIDER (PHYSICIAN, PHYSICIAN ASSISTANT, OR ADVANCED PRACTICE NURSE) WHO WORKS IN PRIMARY CARE, INTERNAL MEDICINE, FAMILY MEDICINE, OR WOMEN'S HEALTH, YOU MAY BE ELIGIBLE!

Participation in this study involves:

- **From you:** Anonymous questionnaire that takes ~20 minutes to complete
- Chance to receive a \$100 gift card

To find out more:

Abby Mutic, PhD, CNM
abby.mutic@emory.edu
404-712-1329

**Scan the QR to
participate**

